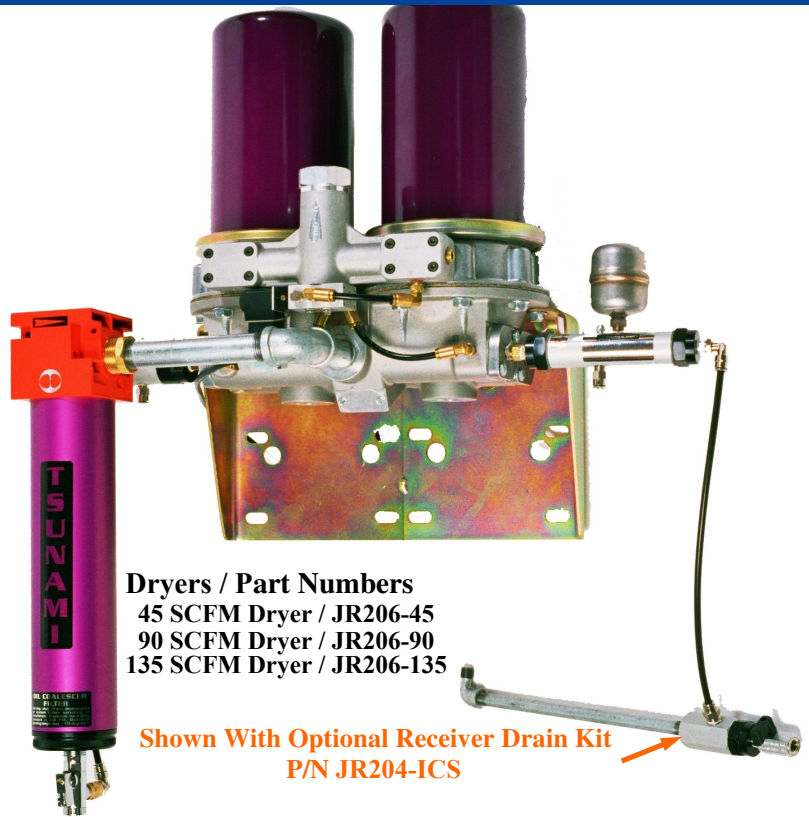


Filter Dryer

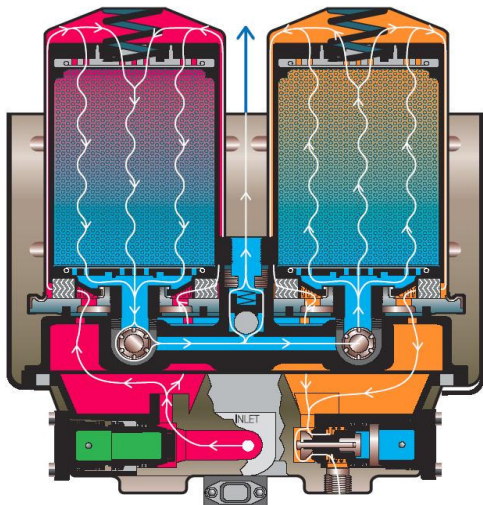
- Minus 10° F dew point provides 200% dryer air than refrigerated dryers
- Lowest operational cost of any air dryer
- Lowest maintenance of any dryer
- High tech molecular sieve will not disintegrate like silica gel desiccant
- No post particulate filter needed after the dryer to stop desiccant migration
- Dryer package complete with oil coalescer and energy efficient piston drain
- Very compact design includes universal mounting bracket
- Installs in minutes between receiver and piping
- Expandable up to 60 HP compressors
- Can operate multiple Moisture Minder® drain valves on other items in compressor room.



Dryers / Part Numbers
 45 SCFM Dryer / JR206-45
 90 SCFM Dryer / JR206-90
 135 SCFM Dryer / JR206-135

Shown With Optional Receiver Drain Kit
 P/N JR204-ICS

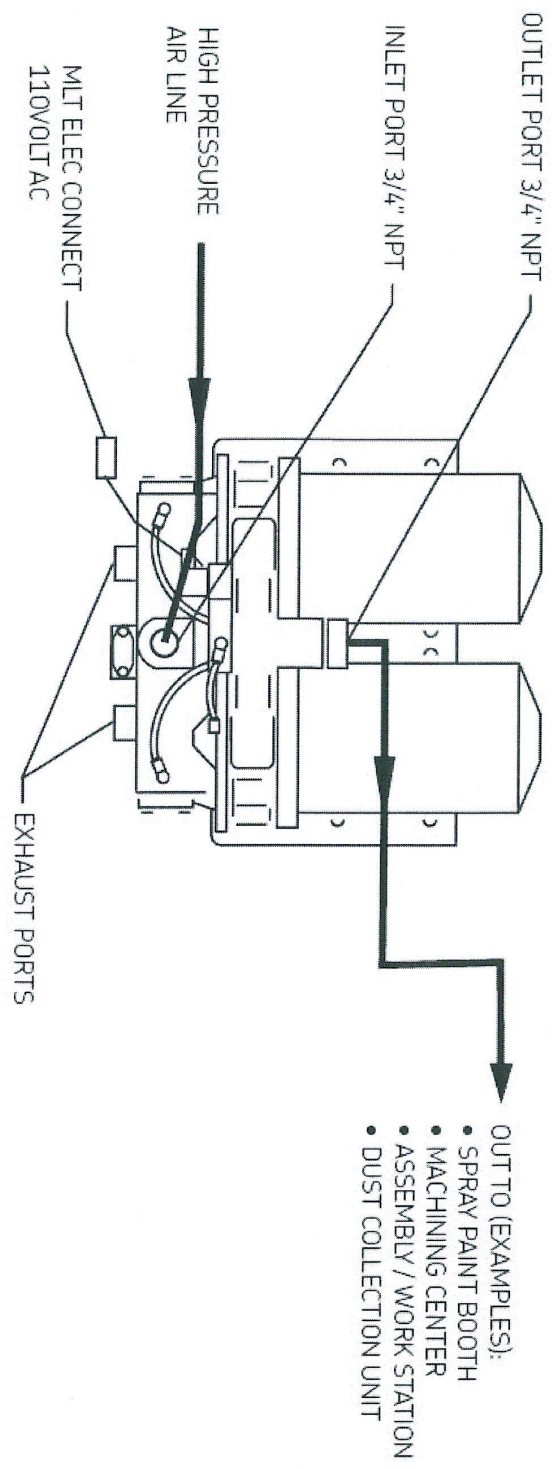
The Filter Dryer delivers very low dew point, dehumidified compressed air.



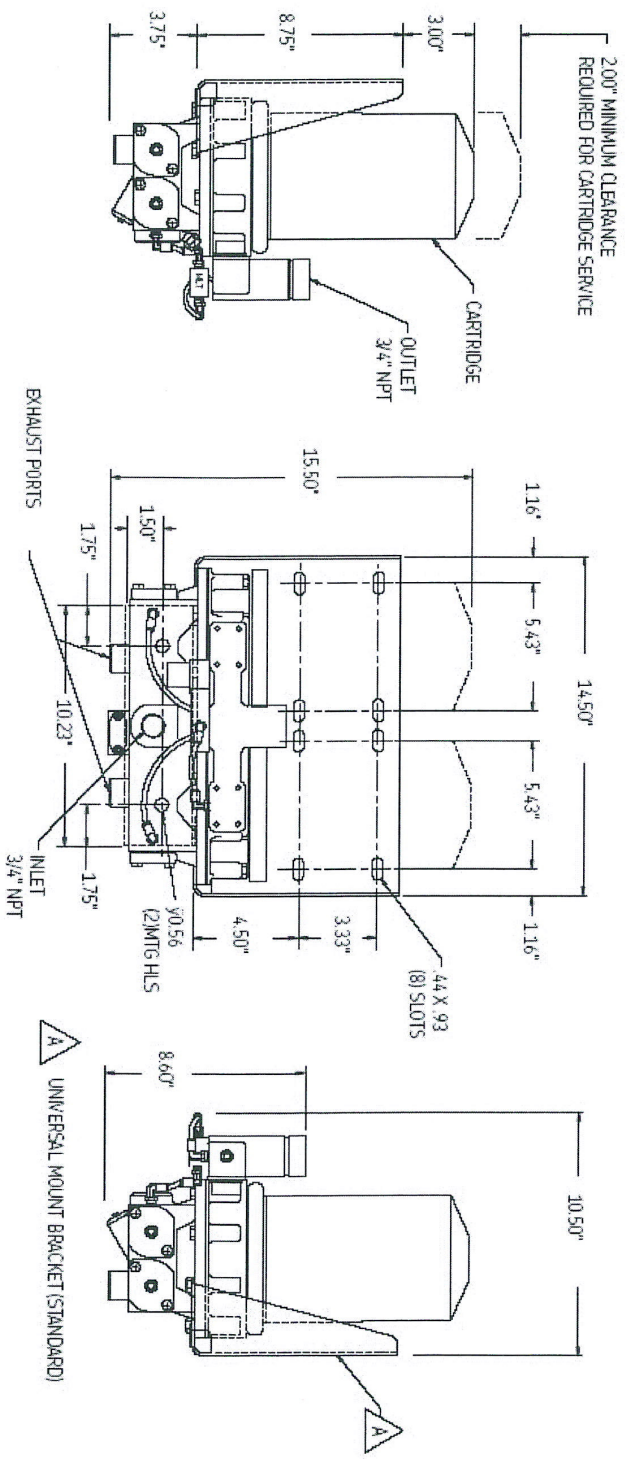
* Typically requires less than 4% regeneration air while others draw up to 20%



Our Filter Dryer is ideal for automotive paint, powder coat, pharmaceutical manufacturing, medical, dental, breathing air and other critical applications that require very high quality compressed air.



Air Connection Schematic



SFD Unit Dimensions